



# Rock Report: Breakout Room #2: Montana & New Mexico





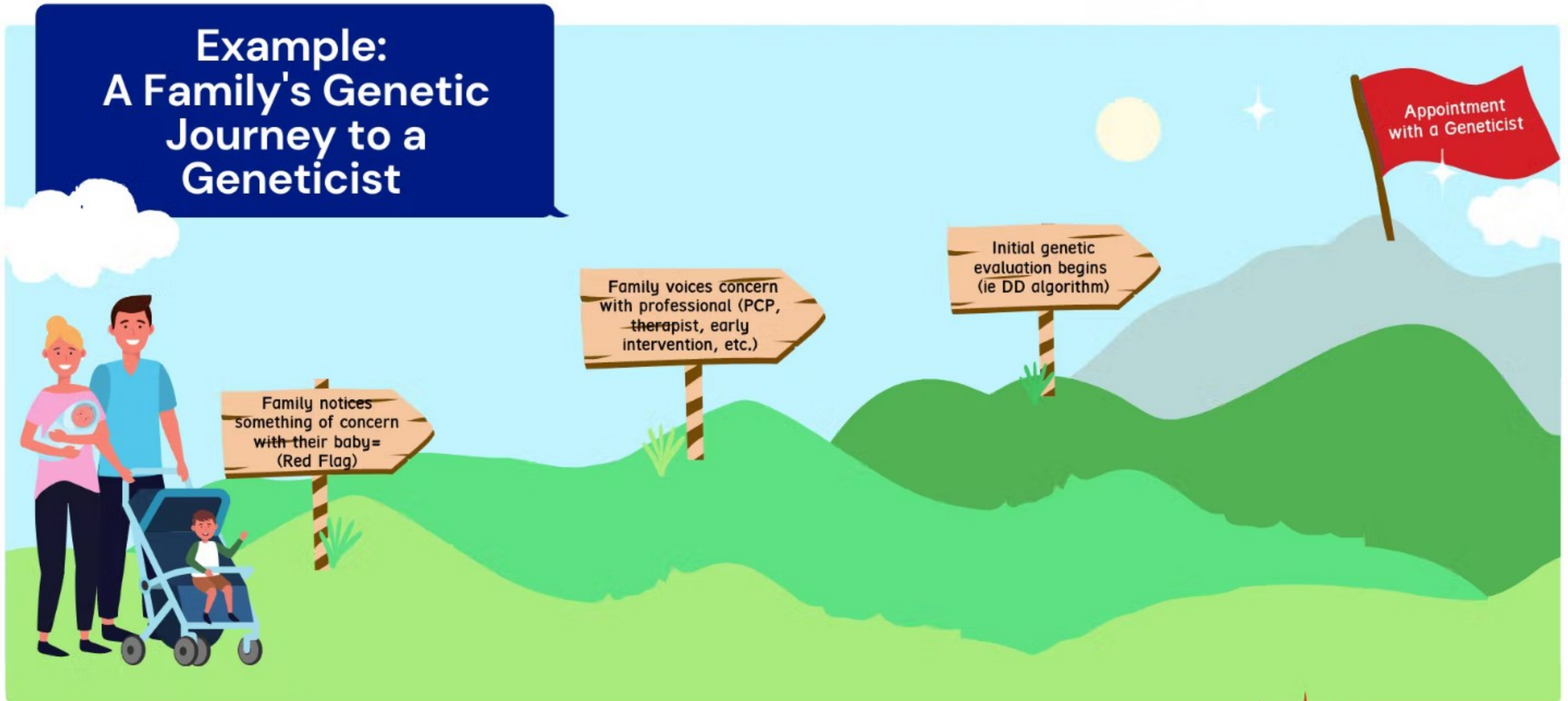
STOP! Reminder to BEGIN recording NOW!





**Welcome to MSRGN's Breakout room! You have arrived at the right place! Hang out for a moment until the moderator advances to the next slide.**





# Example: A Family's Genetic Journey to a Geneticist



**1**  
Fill in each of the milestones a family might reach on the way to their goal.



**2**  
What are the BOULDERS that might stop a family from reaching these milestones?

Genetic Testing is not covered by Insurance  
Family does not follow up on concern

**3**  
How might a family find a way over or through these BOULDERS?  
BLASTS & BRIDGES

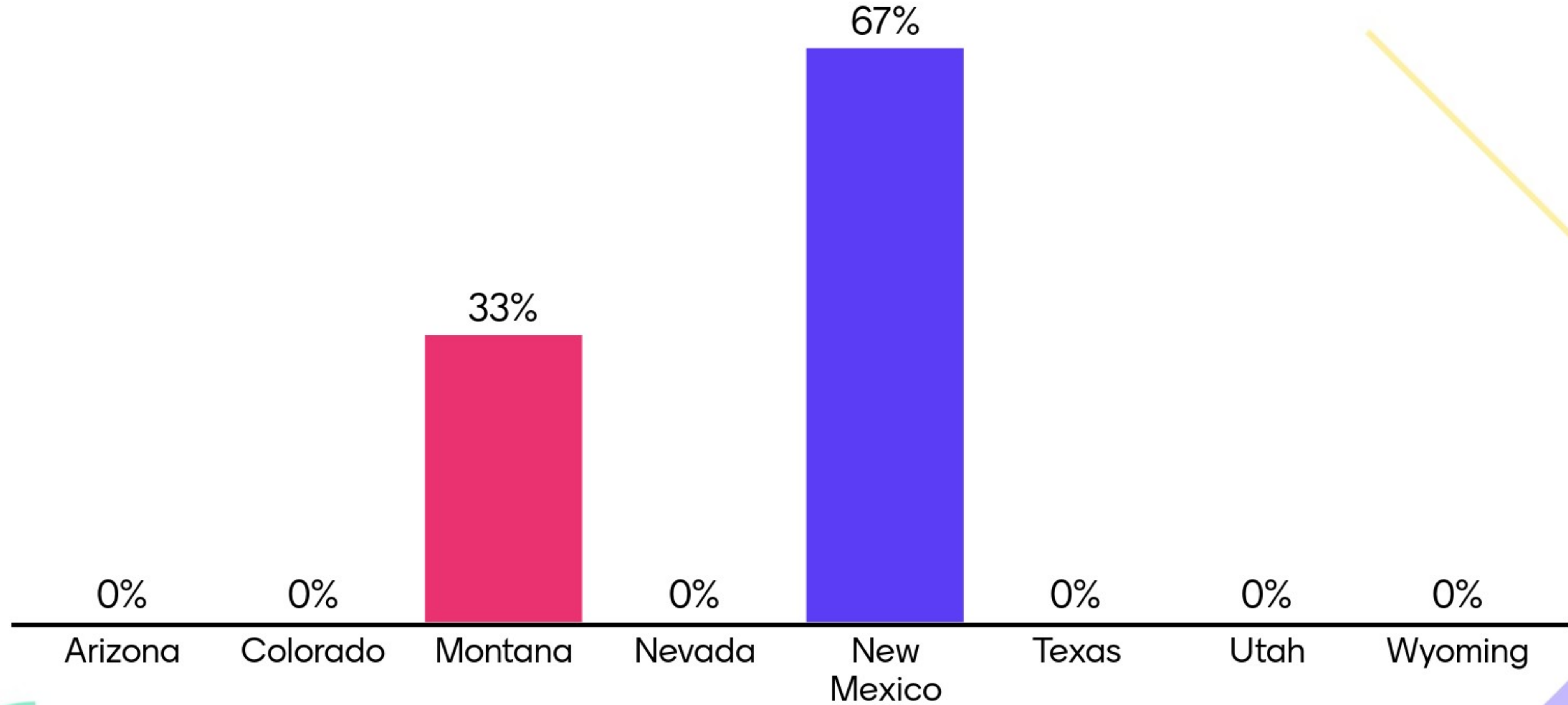


Remember our picture with the family trying to access genetics...

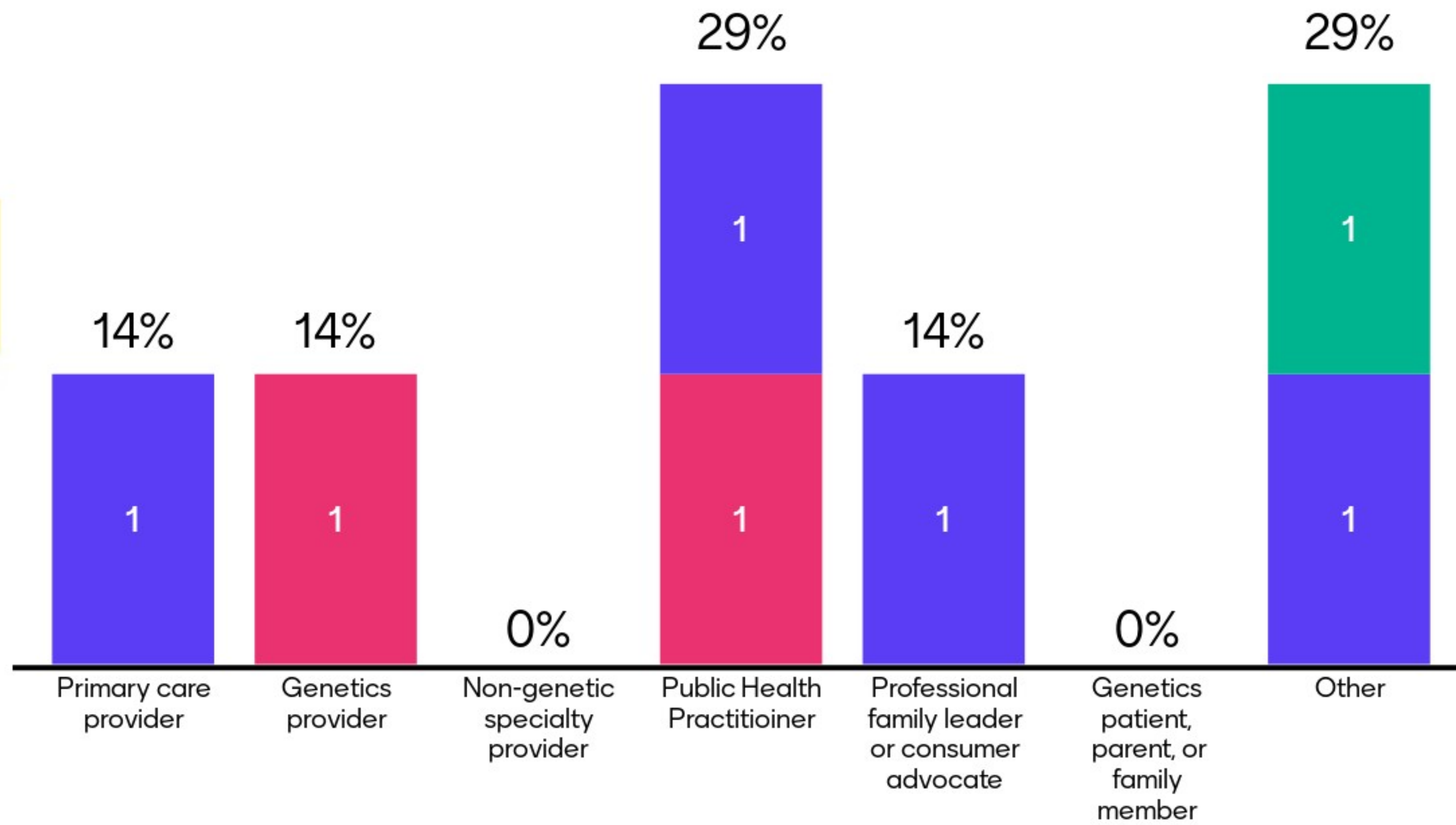




# What state do you live in?



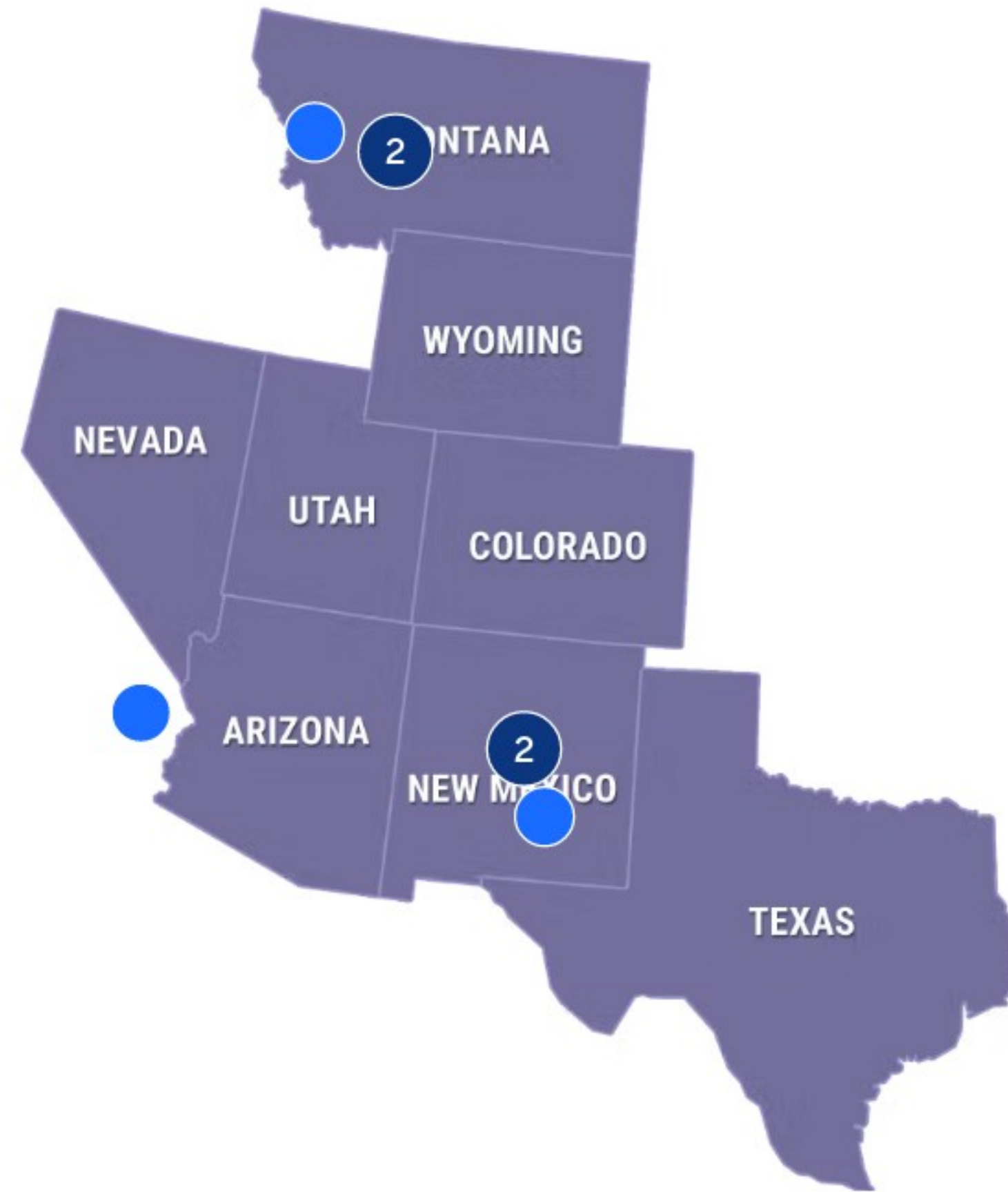
# I am a...



## What state do you live in?

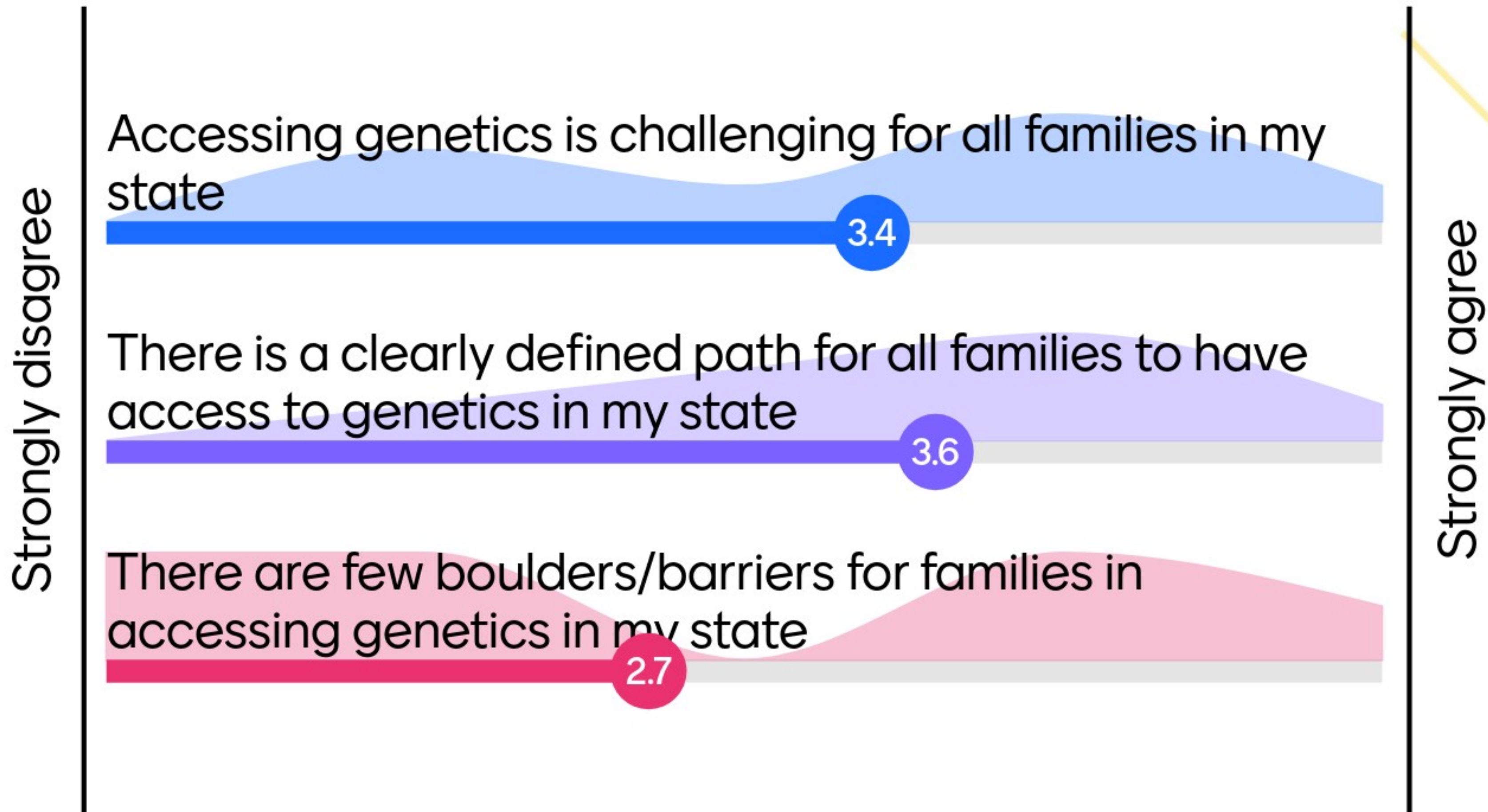
- Arizona
- Colorado
- Montana
- Nevada
- New Mexico
- Texas
- Utah
- Wyoming
- Unknown

# Drop a pin on where you live in the Mountain States



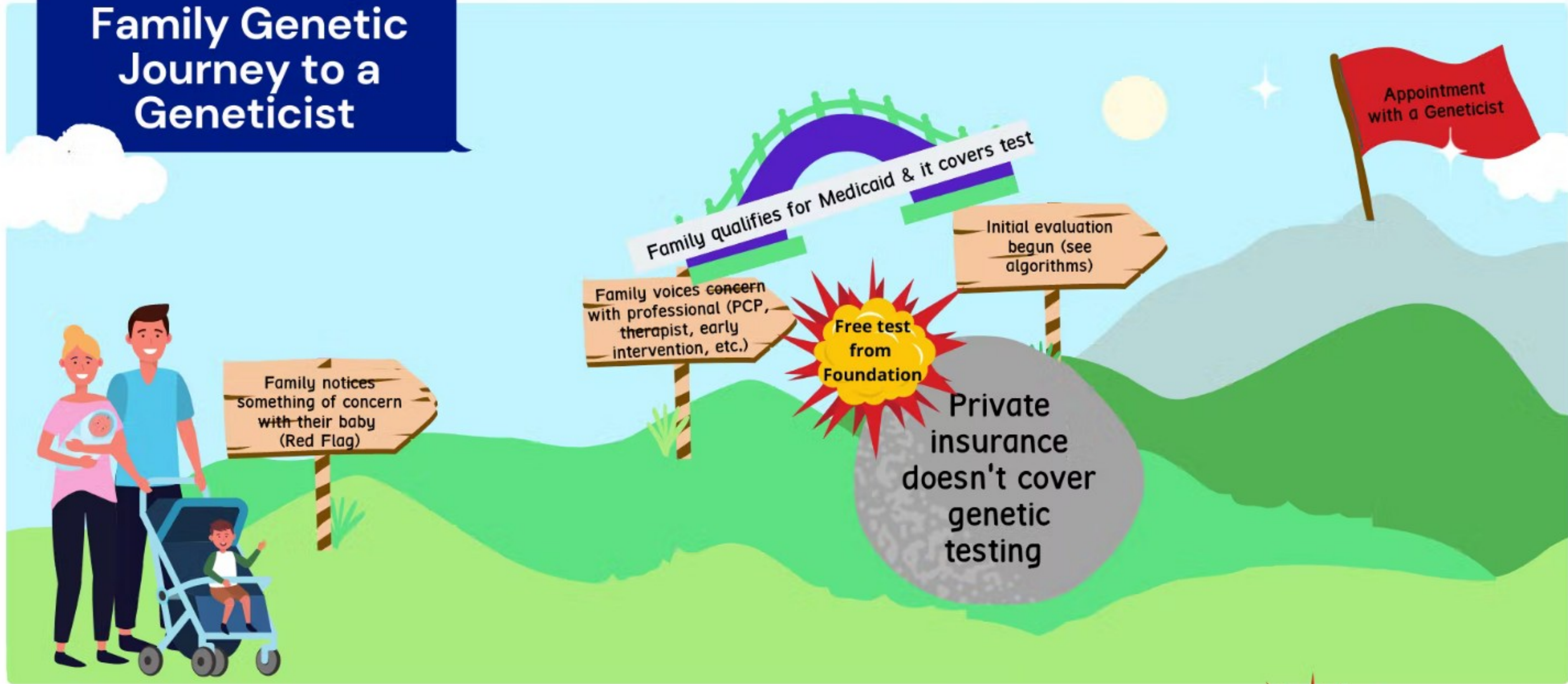


# Rate these Statements: Agree/Disagree





# Family Genetic Journey to a Geneticist



1

Fill in each of the milestones you would like to reach on the way to your goal.



2

What are the blockers that might stop you from reaching these milestones?



3

How might you find a way over or through these blockers? BLASTS & BRIDGES



Remember our picture again and the BOULDER....





# What do you think is the biggest BOULDER (barrier) for families accessing genetics in your state?

rural community  
getting an appointment  
lack of providers  
wait time  
distance  
appointment  
distances  
transportation  
no easy path  
long wait time  
one pediatric provider  
too long of waits  
one regional center  
cost  
insurance



# Of the words you just saw in the word cloud... what is the biggest BOULDER (barrier) for families accessing genetics in your state?

distance

wait time

Appointments

Long wait times

Wait time

Distances

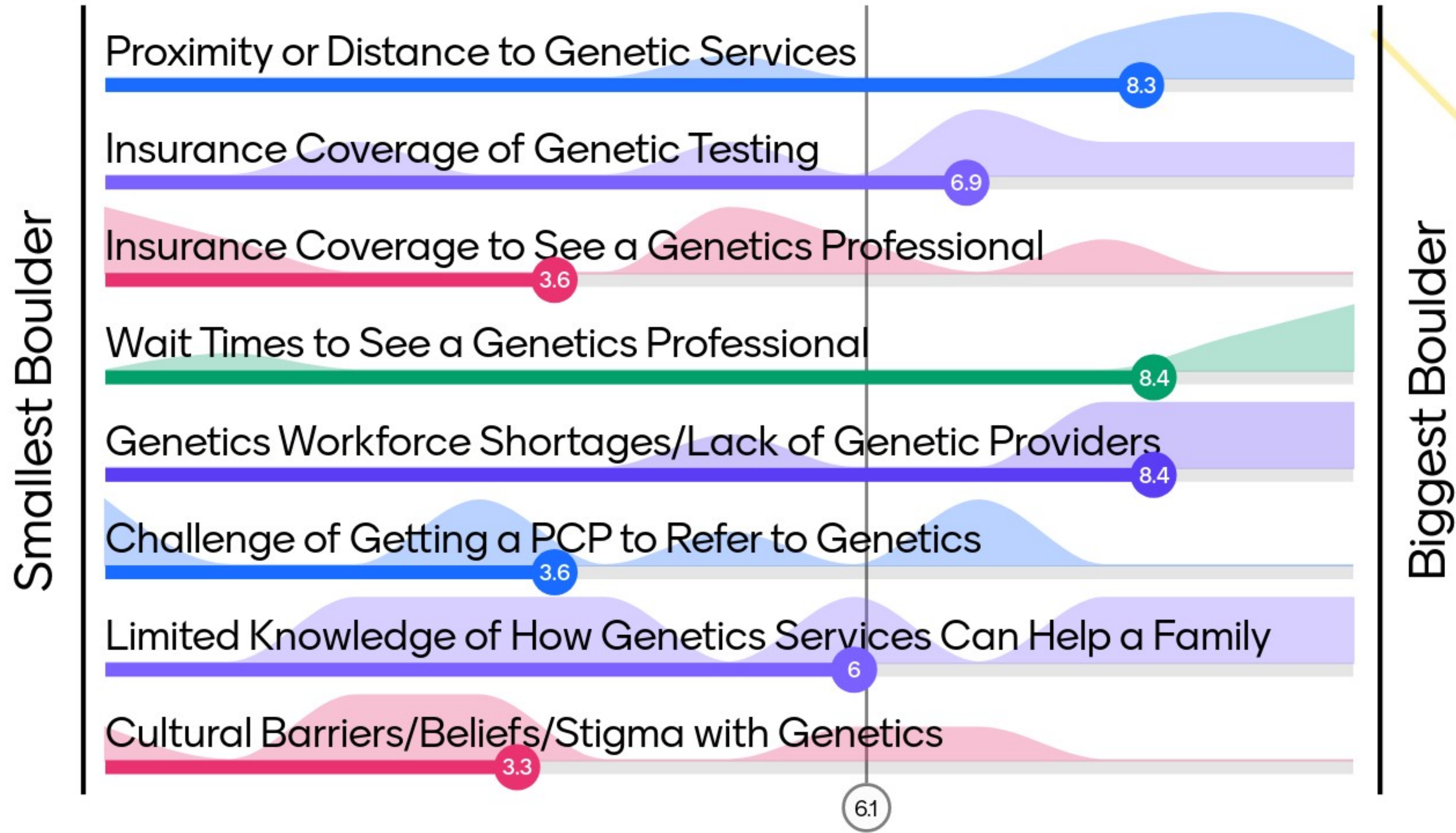
Distance

Lack of providers

One regional academic center



These are some things we have been hearing from families and AC as BOULDERS. Choose a value for each boulder from smallest (1) to biggest (10)





# Which of these BOULDERS is the biggest (in your state)?



29%

Proximity or Distance to Genetic Services

0%

Insurance Coverage of Genetic Testing

0%

Insurance coverage to See a Genetics Professional

43%

Wait Times to See a Genetics Professional



14%

Genetics Workforce Shortages/Lack of Genetic Providers

0%

Challenge of Getting a PCP to Refer to Genetics



14%

Limited Knowledge of How Genetics Services Can Help a Family

0%

Cultural Barriers/Beliefs/Stigma with Genetics



# Solution time!

Blasting and Bridging our Boulders





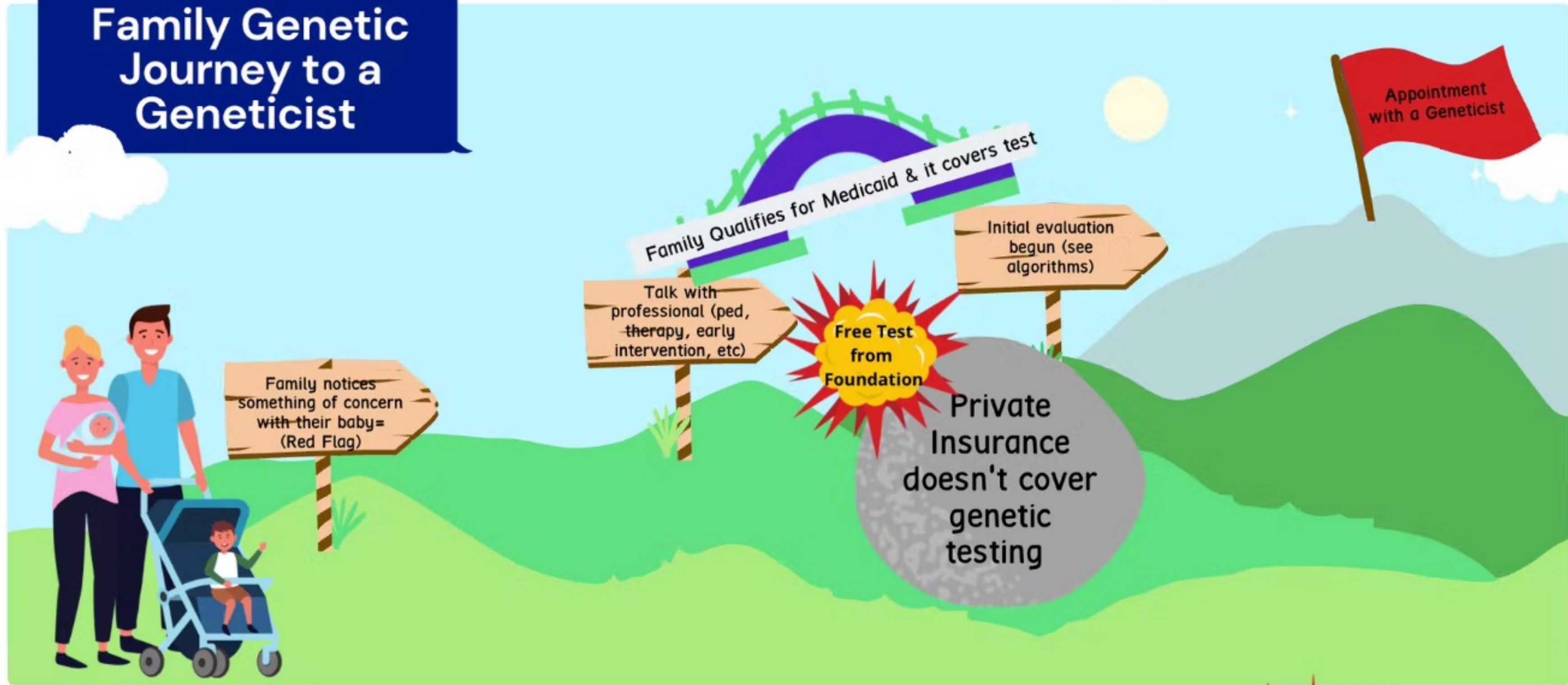


Let's pick a BIG boulder and brainstorm on Solutions!





# Family Genetic Journey to a Geneticist



**1**  
Fill in each of the milestones you would like to reach on the way to your goal.



**2**  
What are the blockers that might stop you from reaching these milestones?



**3**  
How might you find a way over or through these blockers?  
BLASTS & BRIDGES



**STOP!** Gain Consensus from the Breakout Room on a **BIG BOULDER** to tackle for **SOLUTIONS**







STOP! Pick ONE BOULDER before you go to next slide. Moderator please write down the BOULDER picked by the group!



# Our Big BOULDER is \_\_\_\_\_! Braindump and Brainstorm any and all ways to BLAST (remove barrier) this Boulder! 3, 2, 1 - GO!

Asynchronous telemedicine

Outreach clinics

Use MSF model

Crossing states to other regional center. NM to CO

Telemedicine

Enable PCPs to order appropriate genetic testing

Establish insurance reimbursement for Genetic Counselors

Form regional or national collaborative to provide services





# Our Big BOULDER is \_\_\_\_\_! Braindump and Brainstorm any and all ways to BRIDGE (partnership to go around, over) this Boulder! 3, 2, 1 - GO!

Telemedicine; real time and asynchronous

Insurance and Medicaid Providers at the table to hear about access issues.

Establish way for geneticist to consult with PCP for ordering testing

Support pcps - easier consultation access to a geneticist maybe a regional consult line

Develop regional or national collaborative to fill gaps in accessing genetic professionals

CO to NM Telemedicine made families in NM drive to state line, about 40 Miles to start Genetics appointment.

# Now let's think about ALL the other Boulders that have been mentioned today... and let's BLAST and BRIDGE them! Type in the box BOULDER: SOLUTION

Don't delay referrals to EI or services while waiting

Easier ways for families to navigate Medicaid travel reimbursement

Wait times: PCP's start referrals to other providers based on symptoms

Regional Genetics provider meets with family, then meets with primary care to discuss testing, lab to send to. Referral was made initially by primary care provider.

Group transpiration? Native American, Hutterite populations come to mind





# Thanks for joining us!

We will now be exiting the breakout room and joining the main session after a 15 minute break. If you remain logged into zoom you will automatically be taken back to the main session 5 minutes before the next session ends. If you would like to finish a conversation over the break, feel free to hang out here for a few minutes to chat before the next session begins at 4pm CT.

But, if you want or need to take a break, please do so by turning your off your camera and mic.

Break Time 3:45-4:00 PM CT

