

**Care Maps:
Ascending the Peaks, Navigating Valleys and Connecting Everything in Between
Cara L. Coleman JD, MPH**

Conflicts of Interest

- None!

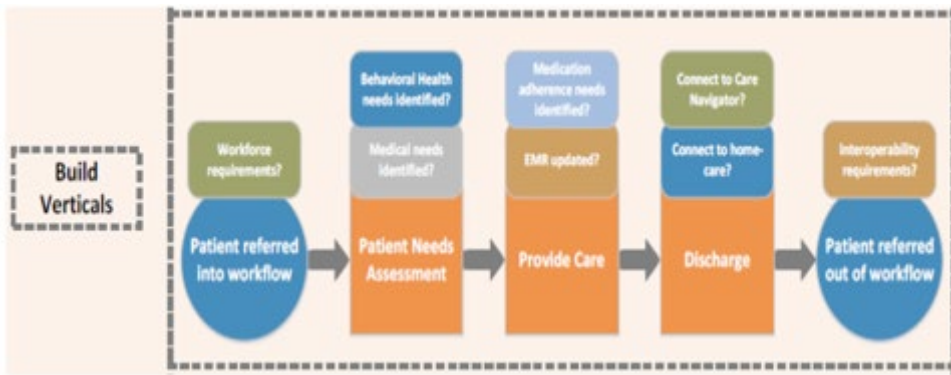
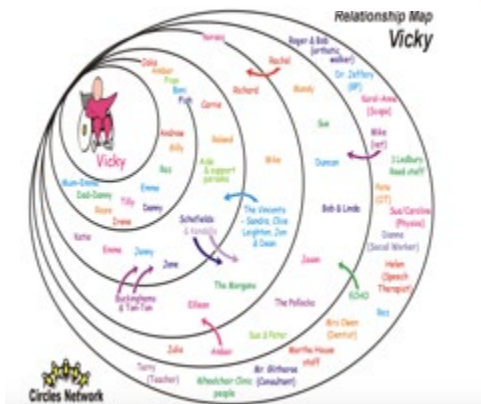
Objectives

- Explain the care mapping process and how it can improve communication, collaboration and care.
- Provide examples of how care maps can be used at the individual and systems levels.

Plans and Maps a Plenty in Disability and Healthcare: Person Centered Planning, Process Mapping and More



PATH (Planning Alternative Tomorrows with Hope)

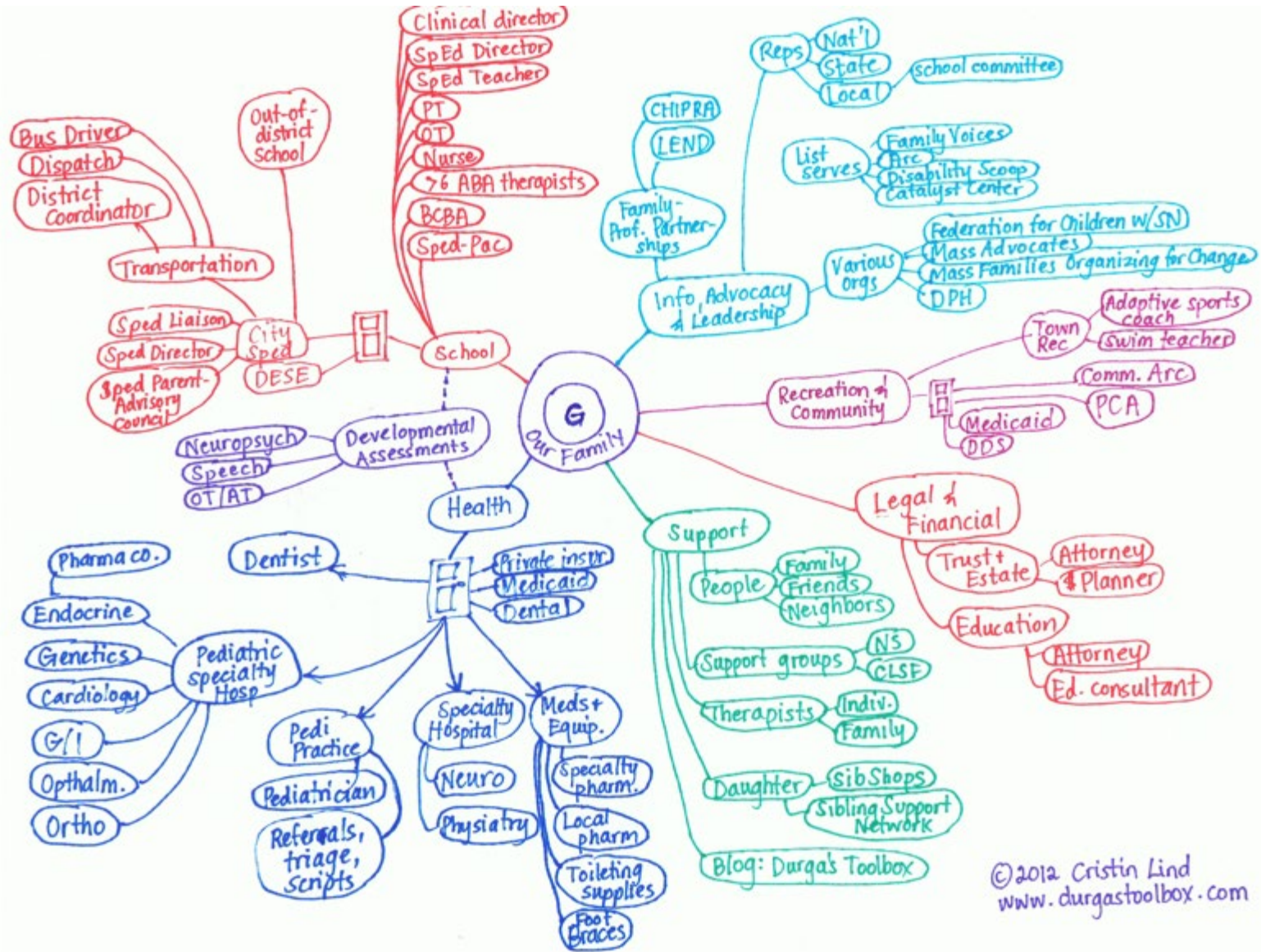


**“Each fresh peak ascended
teaches something.”**

-Sir Martin Conway



The Original "Care Map"



© 2012 Cristin Lind
www.durgastoolbox.com

Neurological:

Agenesis Corpus Callosum
Cerebral Palsy
Cognitive Impairment
Cortical Vision Impairment

Otolaryngology:

Bi-lateral mild-moderate hearing loss
Recurrent Otitis Media

Pulmonary:

Laryngo malacia
Tracheal malacia
Chronic lung disease

Cardiac:

Mitral Valve Prolapse with Mitral regurgitation
Long Q-T syndrome
ASD and globular aortic root

Orthopedic:

Osteoporosis
Spasticity
Chronic Fractures
Calcaneous Feet
Bi-lateral patellar dislocation
Scoliosis

Gastrointestinal:

Intestinal dysmotility
Malnourishment
Bacterial Overgrowth syndrome
Short Gut Syndrome
Bishop-Koop Ostomy

**Urinary:**

Bi-lateral hydronephrosis
UPJ (Ureteropelvic junction) obstruction
Neurogenic bladder
Chronic Urinary Tract infections

Pain:

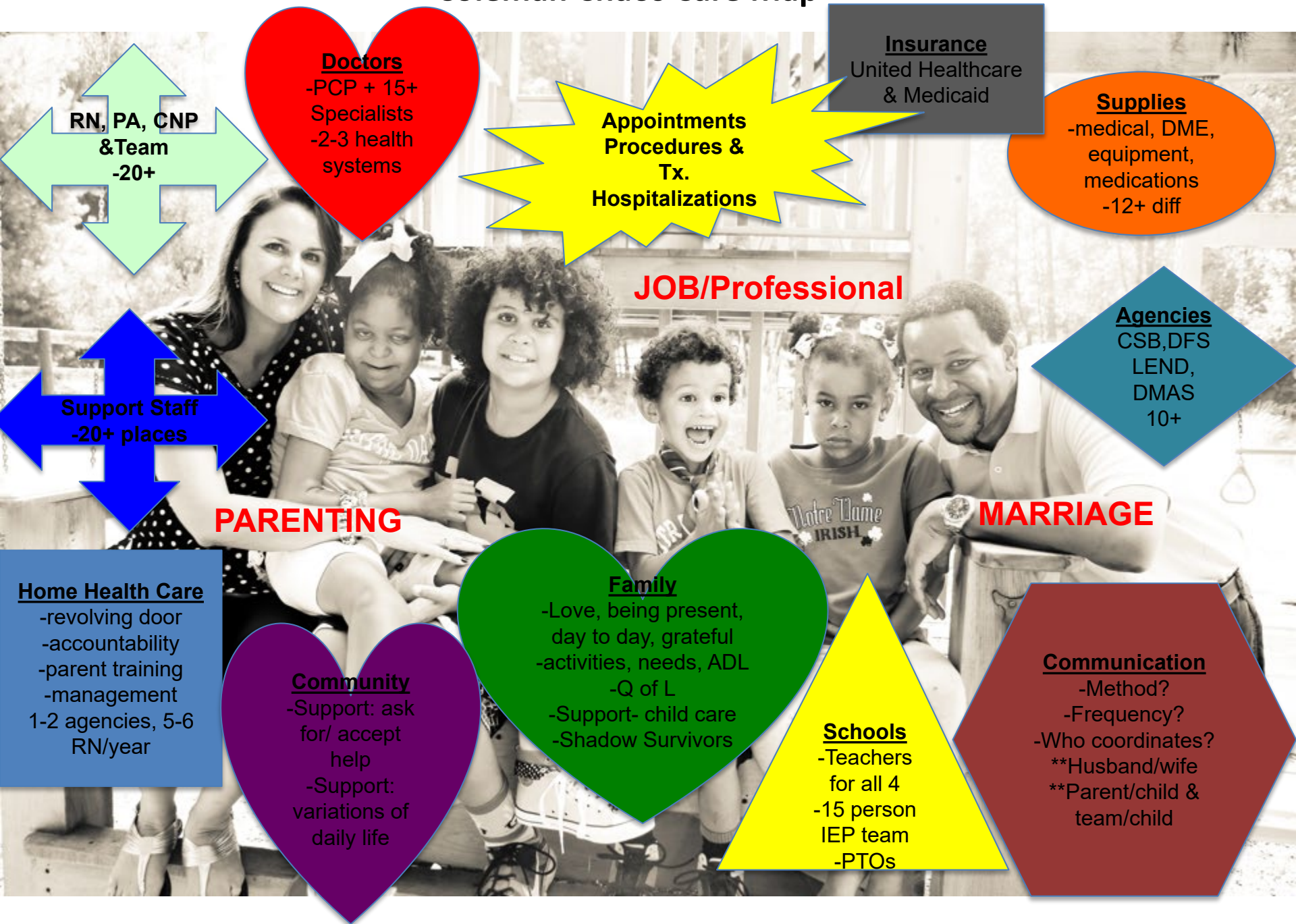
Chronic Pain
Neuropathy

The Coleman Chaos

- 16 physicians
- 20+ advanced care professionals
- 20+ support staff
- 3 health systems
- Multiple Home Health Agencies
- 10 total local/state agencies
- Commercial Insurance and Medicaid
- 12 + different suppliers
- 15 member IEP team
- NO shared plan of care
- EMRs do NOT communicate
- “Team” does NOT communicate
- NO true single locus of care/ PCMH
- NO Care Coordinator (other than mom)
- 6 Coleman’s



Coleman Chaos Care Map



Doctors
-PCP + 15+ Specialists
-2-3 health systems

Insurance
United Healthcare & Medicaid

Supplies
-medical, DME, equipment, medications
-12+ diff

Appointments Procedures & Tx. Hospitalizations

RN, PA, CNP & Team -20+

Support Staff -20+ places

Agencies
CSB, DFS
LEND, DMAS
10+

JOB/Professional

PARENTING

MARRIAGE

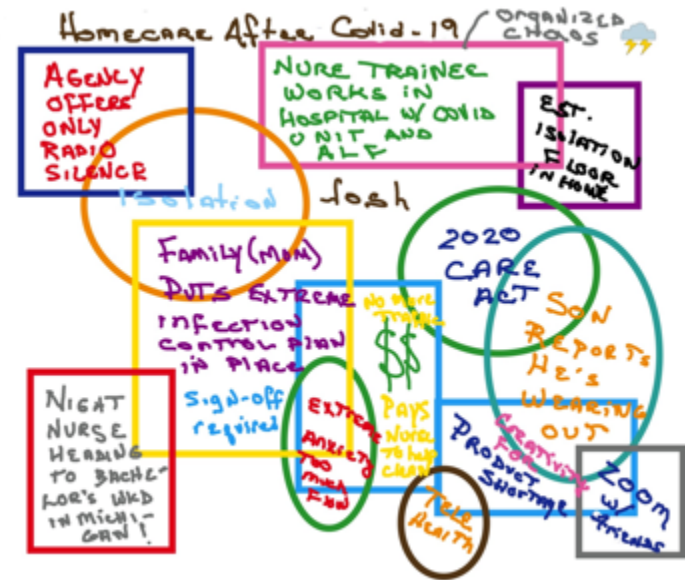
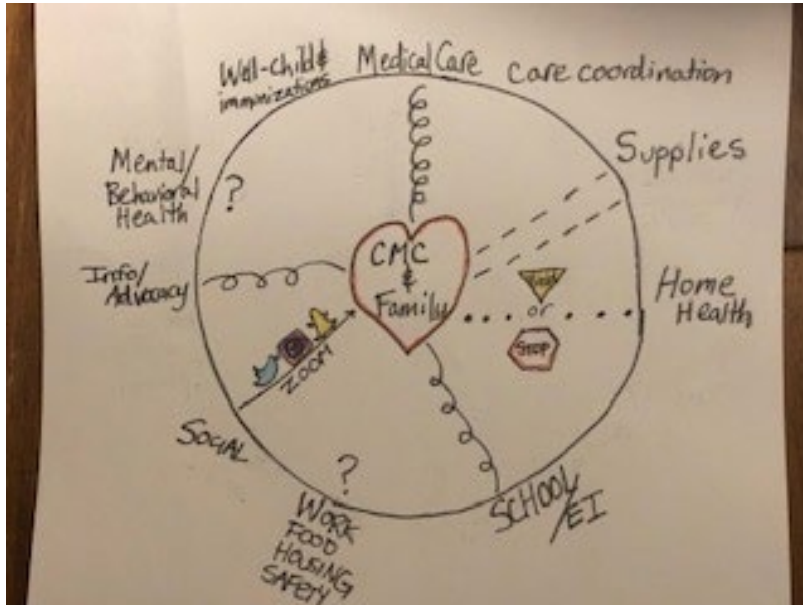
Home Health Care
-revolving door
-accountability
-parent training
-management
1-2 agencies, 5-6 RN/year

Community
-Support: ask for/ accept help
-Support: variations of daily life

Family
-Love, being present, day to day, grateful
-activities, needs, ADL
-Q of L
-Support- child care
-Shadow Survivors

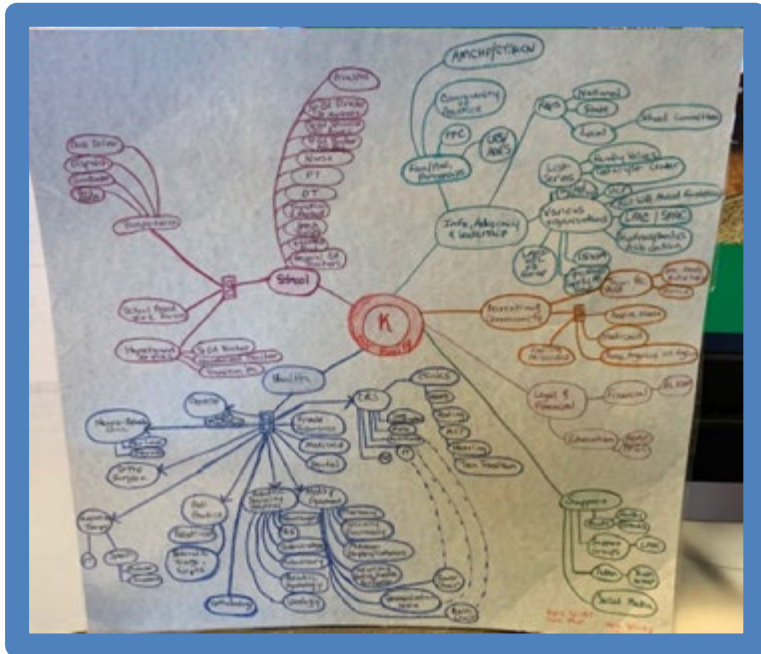
Schools
-Teachers for all 4
-15 person IEP team
-PTOs

Communication
-Method?
-Frequency?
-Who coordinates?
**Husband/wife
**Parent/child & team/child

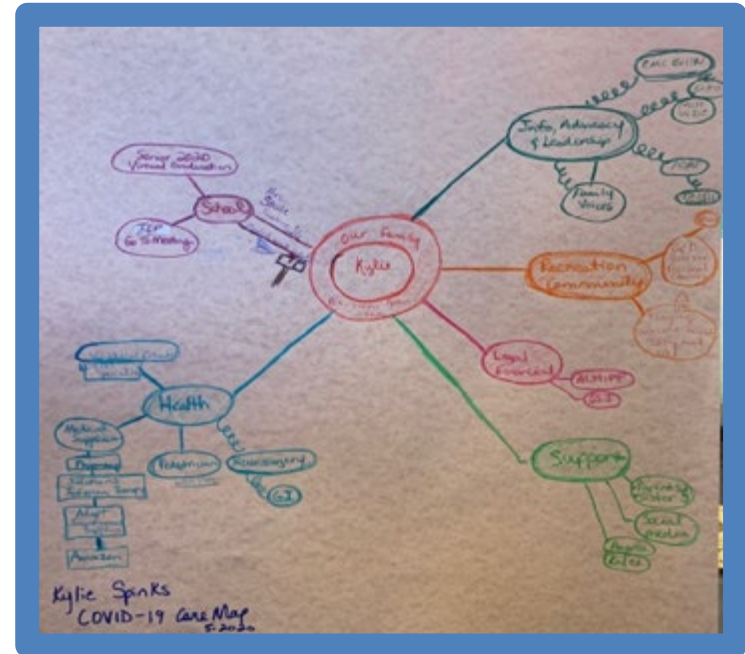


The Children with Medical Complexity Collaboration Innovation and Improvement Network (CoIIN): Individual to Quality Improvement State Team to Network

Care Maps: Our Lives are a PDSA Cycle



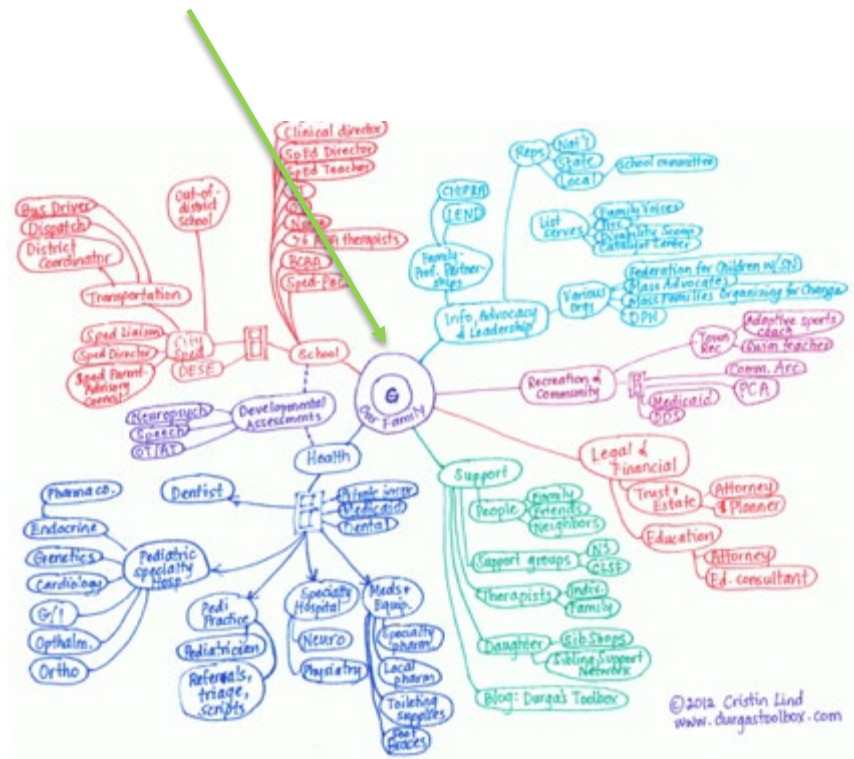
Smiley Kylie's Pre-COVID Care Map



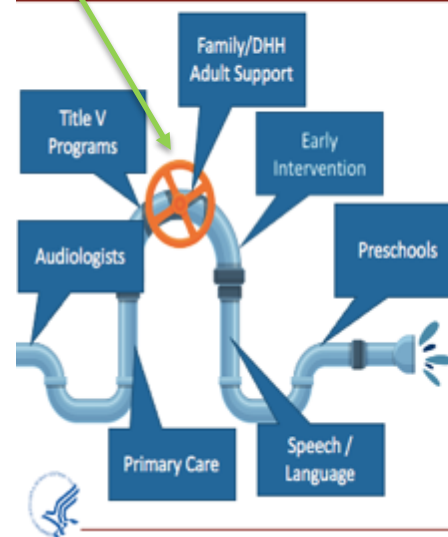
Smiley Kylie's COVID 19 Care Map

Systems Level: Map the Change to Enact the Blueprint for Change

“For too long, the system of services for CYSHCN and families has been **designed around the services themselves**. . . . **Reimagining** the system around the life course of the CYSHCN entails thinking about a **proactive, human-centered** system that addresses health through all of its determinants, and views access as a **journey built on relationships instead of a series of transactions.**” (Access to Services, Kuo et al. 2022)



Everyone Helps Identify/Address the Leaks



SYSTEMS LEVEL
Health equity, legislative support, financing systems, care integration . . .
PROVIDER LEVEL
1-3-6 knowledge, workforce capacity, communication with families, guidance available, database capacity . . .
PATIENT / FAMILY LEVEL
Competing needs, support network, financial support . . .

So, What is in a Care Map?

How Can We Use it for the Peaks, Valleys and Everything in Between?

- Make sense of the chaos
 - For family
 - For PCP and care team
- Communication tool
- QI tool
- Process/ systems change map



Resources

- [Boston Children's Care map site](#)- includes important links to: Care Map Guide for Patients/ Families, Care Map Guide for Professionals, and information about Care Map App.
- [Family Voices of Wisconsin Care Notebook](#) publication has instructions, guide and templates to use in creating a care map. This article shares about [care map training session](#) with families.
- Complex Child Online Publication [article](#) about care mapping.
- [MCHB Blueprint for Change](#) and [Pediatrics Supplement on Blueprint for Change](#)
- Peer Reviewed Journal publications:
 - Developmental Medicine and child Neurology: [Care Maps for Children with Medical Complexity](#)
 - Pediatrics article, [Care Coordination for Children with Medical Complexity: Whose Care is it Anyway?](#), uses care map for illustration, discussion and strategizing